

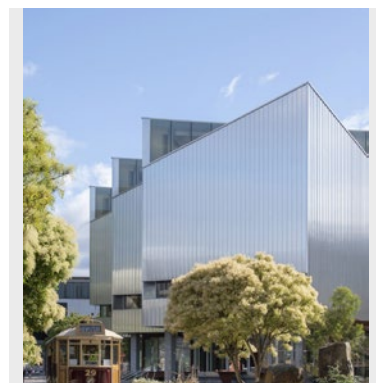
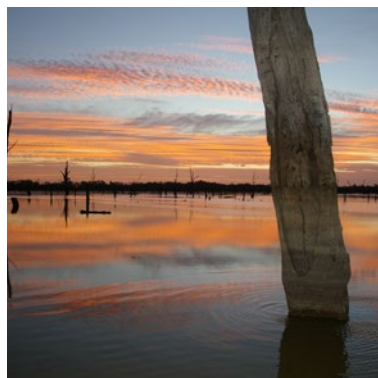
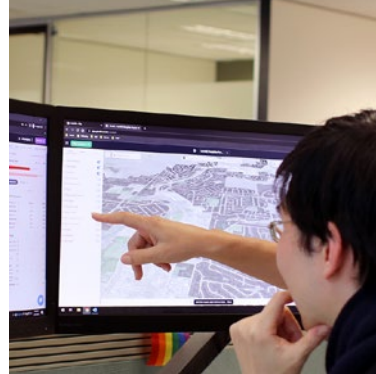
Awards for Planning Excellence

National



20 AWARDS FOR
24 Planning
Excellence

PLANNING INSTITUTE
OF AUSTRALIA



Contents

Message from the Chief Executive Officer	04
Message from the President/National Awards Convenor	05
2024 PIA National Awards Sponsors	06
2024 PIA National Awards Judges	10
About PIA	13
Awards Winners & Commendations	14
Climate Change & Resilience	18
Community Wellbeing & Diversity	20
Great Place	21
Improving Planning Processes	22
Planning with Country	24
Planning Research	27
Stakeholder Engagement	29
Strategic Planning Project	31
Technology & Digital Innovation	32
Tertiary Student Project	34
Young Planner of the Year	37
2024 Award Nominations	38

Message from the Chief Executive Officer

The National Awards for Planning Excellence are a highlight on the annual PIA calendar, and with good reason. These awards are an opportunity for us as planners to take a moment away from the busyness of our daily lives and recognise the achievements of some extraordinary people and projects.

Our planners make Australia one of the most liveable countries in the world. However, they must balance competing priorities and interests, look for innovative solutions, and stay abreast of changing technologies, trends, and choices.

It's no easy feat, so we want to ensure planners get the recognition they deserve. Our planners play a significant and important role in driving sustainable development, enabling equity and access, tackling some of society's biggest issues, such as housing and the climate crisis, and shaping our communities into places and spaces that meet the needs of all Australians.

These Awards put the spotlight on those who are doing just that, highlighting the best of the best. They provide a fantastic benchmark for planners Australia-wide to draw on the nominees' knowledge and practices, and their recognition enables others in the profession to integrate award-winning practices and learnings into their work.

Having taken the stage as winners in their respective State and Territory Awards for Excellence, our nominees have already shown us their creativity and resilience. With such a high calibre of nominations, the judges certainly had their work cut out for them.

So, congratulations to all who are honoured in PIA's 2024 National Awards for Planning Excellence. You have set the bar high.



Matt Collins MPIA
Chief Executive Officer

Message from the President/ National Awards Convenor

Welcome to the 2024 PIA National Awards.

As the National Awards Convenor, I find it an immense privilege to witness our profession's full spectrum of work. Across the country, planners are reaching new heights of achievements, deploying 'out-of-the-box' thinking, and reimagining how we can make our cities, towns, and rural communities more vibrant, sustainable and equitable.

These awards are a chance to recognise and celebrate these achievements and acknowledge the dedication and passion evident throughout the profession.

Planners wear many hats, and the Awards reflect this diversity. From urban planners who are creating smarter, more connected cities to environmental planners who are protecting our natural resources to transport planners who are improving the way we move around, each and every one of our nominees has made a significant contribution to planning.

This year, the judges had the difficult task of choosing between 58 outstanding nominations across 11 categories. Selecting winners and commendations is hard when the quality of nominations nationwide is so high. We are proud to honour those who have demonstrated the highest levels of excellence in their work.

I thank the dedicated team of judges who have diligently reviewed all nominations. I would also like to acknowledge the awards teams in the States and Territories who played a crucial role in getting these nominations to the National Awards arena.

On behalf of the judging panel, congratulations to each award recipient.

Your hard work and dedication have not gone unnoticed, and your contributions to the field of planning will have a lasting impact on our communities.



A handwritten signature in black ink, appearing to read 'Darren Crombie'.

Darren Crombie RPIA (Fellow)
President
National Awards Convenor

2024 PIA National Awards Sponsors

06

PRINCIPAL SPONSOR

/ TECHNOLOGY & DIGITAL INNOVATION CATEGORY SPONSOR



Indara is Australia's leading digital infrastructure company. We own, build, operate and manage the digital infrastructure that keep Australia connected.

We have a growing portfolio of more than 4,300 mobile towers and rooftop sites strategically located across Australia with a focus on high-value metropolitan, regional, and rural areas. We are also building for tomorrow, expanding beyond our core tower infrastructure capabilities with a range of solutions to support emerging technologies and power smart cities.

Our vision is to accelerate a sustainable digital future for all Australians, capitalising on transformative new technologies that have the power to create smarter, more connected communities. With our customer-focused and innovative mindset, we draw on our engineering and asset management expertise and proven capabilities to offer our customers an expanding range of solutions and services to support their ambitions.

We're Indara – we're empowering Australia's digital future.

www.indara.com

CLIMATE CHANGE & RESILIENCE



Planned Cover would like to congratulate all nominees for their submissions in the 2024 PIA National Awards. We are proud of our long-standing partnership with PIA and look forward to assisting members with their various insurance and risk management requirements.

As a specialist in the design professionals' space, Planned Cover have a thorough understanding of the industry in which town planners operate and the various contractual obligations imposed on the profession. Operating as a Broker, Planned Cover have connections with numerous insurers and will review and negotiate both the policy coverage and pricing of a PIA members' insurance program.

We encourage you to connect with your State-based Planned Cover representative.

www.plannedcover.com.au

COMMUNITY WELLBEING & DIVERSITY



The RMIT University Urban Planning programs have operated since 1971 and today, along with our Centre for Urban Research, is the largest provider of planning education in Australia, with an increasingly global reach.

Our industry partners, students and graduates operate across a range of planning sectors, and our high-profile research offers a focus on contemporary urban policy.

We are proud to be partners of PIA as educators, researchers and industry leaders.

www.cur.org.au

GREAT PLACE



At Development Victoria, we create places for people.

We're a government agency partnering with industry and communities to transform ambitious ideas into reality.

We reimagine iconic places like the Melbourne Arts Precinct and State Basketball Centre to transform them for future generations. We develop entire precincts like Docklands and Fitzroy Gasworks, unlocking public land to create connected, sustainable places where people can live, work, play and thrive. We build homes close to jobs, services and transport – and we sell them to Victorians on average incomes, so they too can have the security of a place to call home.

Together, we deliver places that make a genuine difference to the people of Victoria.

www.development.vic.gov.au

IMPROVING PLANNING PROCESSES



Creating tomorrow's communities, today.

Streamline your building assessment and consent processes to create tomorrow's communities, today. Encourage responsible development through efficient and consistent assessments with engaged communities.

Using Objective software, thousands of public sector organisations are shifting to being completely digital. Where our customers can work from anywhere; with access to information, governance guaranteed, and security assured.

Innovation is our lifeblood. We invest significantly in the ongoing development of our products to deliver outstanding solutions to the public sector and regulated industries.

The result - stronger national and community outcomes; and accountability that builds trust in government.

www.objective.com

PLANNING WITH COUNTRY



For over 30 years GML Heritage has connected people and places through heritage.

Our heritage experts, archaeologists, architects, historians, planners and interpretation specialists have delivered over 7,000 projects in Australia and internationally.

Our team has experience working in commercial and urban development, infrastructure, education, health, civic and cultural places, landscapes, government-owned properties, defence sites, and iconic destinations.

Our work helps to ensure that heritage is integral to the everyday experience, character and identity of our cities and towns.

We're committed to acknowledging the rights and interests of First Nations communities, promoting inclusion, and recognising heritage's significance in shaping our future.

www.gml.com.au

PLANNING RESEARCH



The nbn® network is the digital backbone of Australia, powering our nation as a leading digital economy and society. New homes, buildings, communities, and cities enable new ways to live, work, learn, trade and play.

nbn is proud to partner with the building and construction industries nationwide to provide people and businesses with fast, reliable, and secure broadband.

We are committed to lifting the digital capability of our growing nation, and to support more liveable, sustainable, and equitable communities across Australia embrace a smarter tomorrow.

www.nbnco.com.au

STAKEHOLDER ENGAGEMENT



**Queensland
Government**

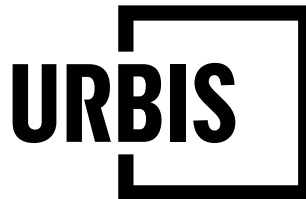
The Department of Housing, Local Government, Planning and Public Works in Queensland is dedicated to ensuring that every Queenslanders has access to a safe, secure, and affordable home that caters to their needs and enables active participation in the social and economic fabric of our prosperous state.

We are focussed on enhancing the planning framework, fostering vibrant communities, and safeguarding our distinct Queensland lifestyle and green spaces as we continue to grow.

Simultaneously, we facilitate reasonable and balanced development to provide homes for Queenslanders in the places they desire for both living and working.

www.housing.qld.gov.au

STRATEGIC PLANNING PROJECT



At Urbis, we have one simple goal – to shape the cities and communities for a better future. It’s something we achieve by drawing together a creative community of practice experts, working to deliver fresh thinking, independent advice, and guidance – all backed by evidence-based solutions.

Whether you engage Urbis in the areas of planning, design, heritage, policy, valuations, transactions, economics, or strategic advisory, you know you’re dealing with the specialists who will connect you to a better outcome, every time.

www.urbis.com.au

TERTIARY STUDENT PROJECT



Department
of Transport
and Planning

The Department of Transport and Planning (DTP) brings together key planning and land use activities, precinct and policy functions as part of an integrated approach to place-based development, delivery and community outcomes.

DTP shapes the long-term vision for land use and built form in Victoria and enables integrated activity to unlock economic opportunity and optimise positive social and environmental outcomes for all Victorians.

We are committed to Aboriginal self-determination, cultural safety and working in partnership with Traditional Owners and Aboriginal Victorians to recognise and celebrate Victoria’s rich diversity.

www.dtp.vic.gov.au

National Awards

Judges



Darren Crombie RPIA (Fellow)

Darren Crombie RPIA (Fellow) is a Principal and Director with E3 Advisory, an independent, employee-owned infrastructure advisory firm providing strategic services to clients across Australia and internationally.

Darren has some 25 years' experience in the Australian infrastructure, planning, economic development, and transport sectors. In that time, he has held senior executive roles in the infrastructure, planning and economic development portfolios in the Queensland Government, and in the transport and infrastructure portfolio in the Australian Government. His most recent role prior to joining E3 was as Queensland's Deputy Director General infrastructure policy and planning.

Darren holds an Honours degree and a research Masters degree in Regional and Town Planning from the University of Queensland, and an Executive Master of Public Administration from the Australian National University and the Australia New Zealand School of Government. He is a Registered Planner and has been a member of PIA since 1996 and is a member of the Australian Institute of Company Directors. He has previously represented Australia on UN and APEC bodies.



Megan Adair MPIA

Megan Adair MPIA has over 30 years' experience gained through senior leadership roles with state, local government, and the private sector. Her expertise spans development facilitation and negotiation, policy formation, urban design, and planning framework development and implementation.

She has held senior regulatory roles of the WA Planning Commission and Presiding Member of Joint Development Assessment Panels - Central and West. She was 2022 Vice President of the PIA WA Committee and is the PIAWA Awards Convenor. Megan is a Fellow of Leadership WA, a board member of Stellar Living, a member of the Australian Institute of Company Directors, and a member of PIA.

She has assisted in the review and final drafting of WA Planning Regulations and the development of State Planning Policy and currently runs her own advisory business.



Claire Fawdry MPIA

Claire Fawdry MPIA is a passionate planner with over 10 years' experience in both local government and the private sector. She is on the PIA Tasmanian Divisional Committee and was the convenor of the PIA TAS Awards for Planning Excellence program for 2022 and 2023. Claire is an Associate at Mesh Planning and excels at navigating the complex regulatory planning process, and engaging diverse stakeholders to achieve positive outcomes for places and people.

Claire was heavily involved in the transition of the interim planning scheme into the Statewide Planning Provisions and development of the Local Provisions Schedule for the City of Launceston. She has extensive experience in the statutory planning permit process, strategic planning projects and project management. Claire enjoys finding innovative solutions for urban planning challenges.



Juliet Grant RPIA (Fellow)

Juliet Grant RPIA (Fellow) is an Executive Director at Gyde Consulting and former President of the NSW Division of Planning Institute of Australia. Juliet is a respected and experienced planner with 30 years' strategic and statutory experience in local and state government and the consulting environment.

Juliet is a Commissioner on the NSW Independent Planning Commission, as well as an expert member on the Southern Regional Planning Panel and the Georges River, Hornsby and Hawkesbury Local Planning Panels. She has a deep knowledge of the political, policy and legislative environment and an in depth understanding of government processes and how to apply them.



James McLean PIA (Assoc.)

James McLean PIA (Assoc.) is a Senior Policy Adviser in the Built and Natural Environment at the Municipal Association of Victoria. In this role he works with Victoria's 79 councils on planning and environment policy and advocacy. He has previously worked in consulting, local government, and academic roles including 8 years teaching at RMIT.

James holds an undergraduate degree in urban and regional planning and a research masters thesis on urban design and planning. He is most passionate about design excellence, regional and community planning, resilience to climate change, and environmental and coastal planning.

James is an active member of PIA Victoria, and was co-convenor of the PIA Victorian Awards for Planning Excellence in 2022 and 2023.



Anne Moroney MPIA (Fellow)

Anne Moroney MPIA (Fellow) is a long-time Canberran working for decades as a strategic planner with strong social and community planning experience in public, private and non-for-profit sectors. She maintains a keen interest in social planning policy and building community resilience.

Anne brings to the Judging Panel the perspective of a retired Fellow on contemporary best practice and an enthusiasm for planning.

Since retiring in 2021, she has maintained a passion for lifelong learning, currently volunteering for the National Capital Authority at the National Capital Exhibition, particularly as a volunteer guide delivering education programs on the story of Canberra to visiting school groups.

Anne is passionate about how planning can build resilience for our cities and communities to respond to contemporary and future disruptors and challenges.



Kym Pryde RPIA (Fellow)

Kim Pryde RPIA (Fellow) is the Director of Planning, Heritage and Dog and Cat Management at the Department for Environment and Water. Kym is a well-known planner and public servant in South Australia with a career spanning more than 20 years in the public service and as a consulting planner. Kym is experienced in the delivery of complex projects and providing strategic advice to the government and proponents.

Kym is currently leading and involved with several key legislative reforms within South Australia and with the Australian Government on the Nature Positive Plan implementation. Kym has been involved with PIA since she was a young planner, including being on the PIA National Board, SA Divisional Committee and was the SA President from 2015 to 2019. Kym has Chaired the SA Awards judging since 2022.



Cat Tatam MPIA

Cat Tatam MPIA is the current President of the Planning Institute of Australia (PIA) Northern Territory, and also previously held the position from 2019 to 2021.

Cat is a qualified Urban and Regional town planner and runs her own planning company Tatam Planning Co., which provides town planning, development feasibility and project management services across the Northern Territory and Northern Australia. Cat is able to leverage more than a decade's planning experience in both private and public sectors across WA, QLD, NSW and the NT. Cat has been a proud Territorian for the past eight years, originally hailing from Perth, WA.

Cat was also the former Chief Executive Officer of the Urban Development Institute of Australia (UDIA) Northern Territory (NT) from 2021-2023. As a passionate town planner, Cat has a keen interest in rural and remote community planning, strategic policy and procedures, and urban design.



Josh Walker MPIA

Josh Walker MPIA is passionate about planning for cities and regions. He has worked in both the public and private sector across Queensland and currently holds the position of Co-ordinator of Regional Planning and Advocacy at Sunshine Coast Council, where he collaborates across the organisation to achieve long term growth management outcomes.

His experience is varied, having formulated strategies and policy for a range of complex urban, rural and environmental issues, as well as managing high-profile development approvals and acting as an expert witness in the Planning and Environment Court (Qld). He has been involved in PIA for around 15 years and held various positions, including Co-convenor of Queensland's Awards for Excellence program.

About PIA

About PIA

Australia's trusted voice on planning

The Planning Institute of Australia – and before it, the Royal Australian Planning Institute – has proudly championed planning professionals in Australia and internationally since 1951. PIA is the only national organisation representing urban and regional planners in Australia, and our goal is to support planners to create a more liveable and sustainable built environment.

Good planning creates and connects us with places that enhance our health, wellbeing and happiness. It ensures our natural and built environments are resilient and able to respond effectively to emerging megatrends like increased urbanisation and climate change.

Planners – highly qualified and ethical professionals with a broad range of skills and knowledge – are central to delivering great planning outcomes for all our communities.

PIA supports, educates and encourages planners at all stages of their careers through university accreditation, mentoring and professional development programs. Through advocacy, collaboration and influence-building, PIA champions planning's key role in creating communities where fairness, equity and access are fundamental and paramount.

Our business is built on a foundation of good governance, efficient and effective systems, member support services and financial sustainability.

For more information on PIA or to become a member, go to www.planning.org.au



NATIONAL BOARD

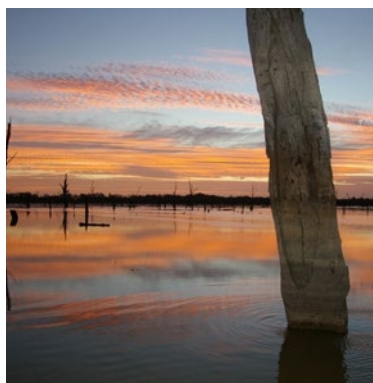
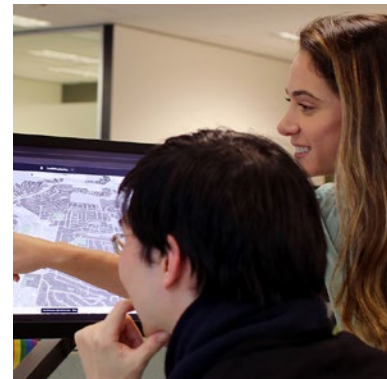
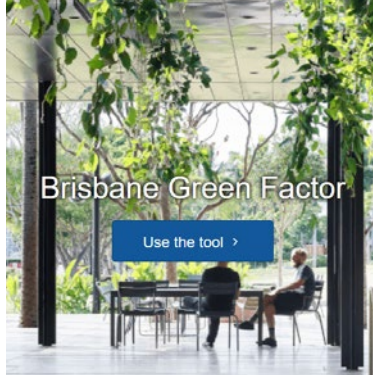
President	Darren Crombie RPIA (Fellow)
Vice-President / Tasmania	Emma Riley RPIA (Fellow)
Vice-President / Western Australia	Ray Haeren RPIA (Fellow)
Australian Capital Territory	Imogen Featherstone RPIA
New South Wales	Rukshan de Silva RPIA
Northern Territory	Chay Garde MPIA
Queensland	Wendy Evans MPIA (Fellow)
Victoria	Laura Murray RPIA
South Australia	Stephen Smith RPIA (Fellow)
Young Planner Director	Andrew Holmes MPIA

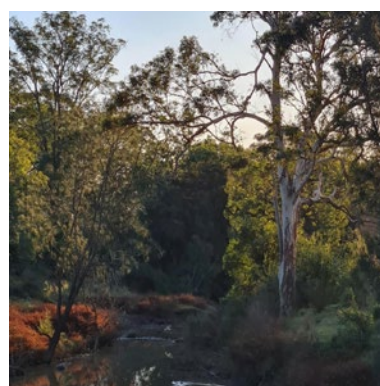
DIVISION PRESIDENTS

Australian Capital Territory	Natalia Anderson RPIA
New South Wales	Sue Weatherley MPIA (Fellow)
Northern Territory	Catriona Tatam MPIA
Queensland	Sean Cullen RPIA
South Australia	Cate Hart RPIA (Fellow)
Tasmania	Michael Purves MPIA
Victoria	Patrick Fensham MPIA (Fellow)
Western Australia	Amanda Sheers MPIA

Awards Winners & Commendations

20





Climate Change & Resilience

18

Climate Change & Resilience

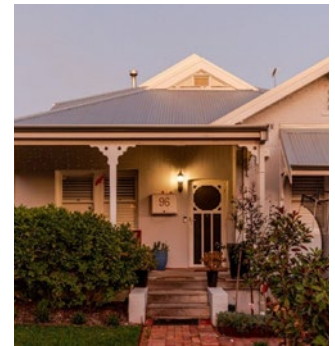
This award recognises projects and initiatives that provide outstanding leadership and/or innovation that makes a positive impact on addressing climate change and can be held up as case study of best practice for the planning profession.

AWARDED TO
CITY OF VINCENT &
CERCLOS

PROJECT
ENVIRONMENTALLY
SUSTAINABLE DESIGN
OF SINGLE HOUSES AND
GROUPED DWELLINGS

This project demonstrates effective collaboration between government and the private sector to address climate change challenges at the development-scale in an affordable and accessible way. The Rapid Life Cycle Assessment app, which calculates life cycle carbon and water impacts of low to medium-density residential buildings, is an innovative and cost effective way to support the delivery of the City's built-form policy objectives.

The judges commend Council for the development of this App that is highly transferable, unique and resulted in tangible outcomes that have improved the performance of smaller-scale and lower value developments.



Category Sponsor



Climate Change & Resilience

COMMENDATION
CRED CONSULTING,
THE NSW DEPARTMENT
OF PLANNING AND
ENVIRONMENT
PLANNING DELIVERY
UNIT, BALLINA SHIRE
COUNCIL, BYRON SHIRE
COUNCIL, CLARENCE
VALLEY COUNCIL,
KYOGLE COUNCIL,
LISMORE CITY COUNCIL,
RICHMOND VALLEY
COUNCIL, AND TWEED
SHIRE COUNCIL

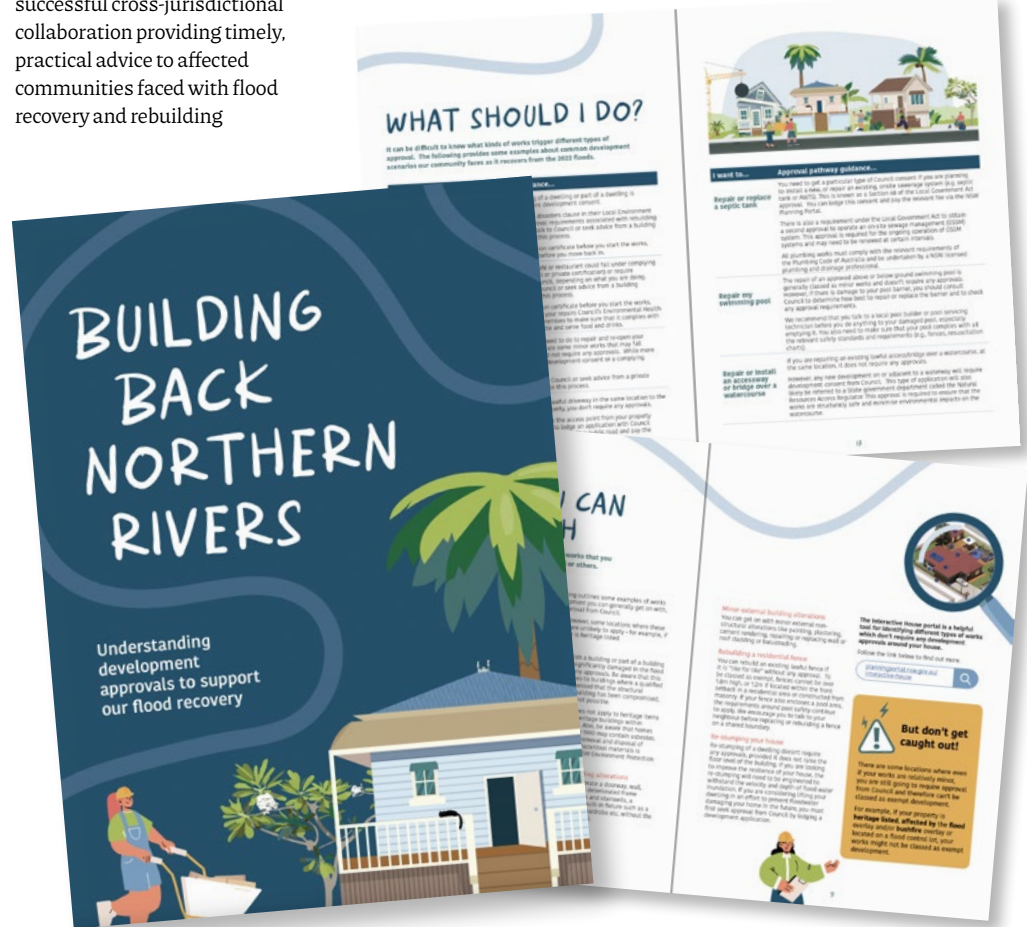
PROJECT
BUILDING BACK
NORTHERN RIVERS

The establishment of guidelines relevant to the various local Councils across a large geographic footprint required a broad level of consultation, engagement and agreement. The resulting document offers a simple yet highly effective guide to navigating the development application and planning process required by those impacted.

Category Sponsor



The judges considered the guideline a great example of successful cross-jurisdictional collaboration providing timely, practical advice to affected communities faced with flood recovery and rebuilding



Community Wellbeing & Diversity

Community Wellbeing & Diversity

20

Community Wellbeing & Diversity

This award recognises the role of planning in improving access to social infrastructure for residents in cities, regions and towns. The award celebrates great social planning that assists and supports community cohesion, safety, and supports the culture of diversity.

AWARDED TO
RAC, TOWN OF PORT
HEDLAND, SHIRE OF
TRAYNING AND TOWN
TEAM MOVEMENT

PROJECT
CO-DESIGNING AND
CO-CREATING PUBLIC
PLACES WITH YOUNG
PEOPLE

Recognising that our regional and marginalised communities have an outflow of young people, this project is considered an excellent demonstration of working with youth and placing them at the centre of community and decision making, to build meaningful civic engagement and strive to keep diversity in these communities.

The project sees youth from predominantly Indigenous background at its centre, delivering

Category Sponsor



tangible long-term outcomes through co-design and co-delivery, providing a springboard to ongoing volunteering, community leadership, and ownership of place. The health and wellbeing benefits of an engaged youth cannot be underestimated in the overall health and wellbeing of a community with longer term retention of families, and safe secure places.

This project illustrates how focusing on this part of regional communities can deliver outstanding, and lasting diversity and community wellbeing outcomes.



Great Place

Great Place

This award recognises a great place, street or neighbourhood. Great places have a true sense of place, cultural and historical interest, community involvement and a vision for tomorrow. A great place is one that attracts, inspires and motivates people. It has a great atmosphere. It's a place that people are proud of. It sparks an individual sense of pride and contributes to the overall community wellbeing. It brings people together whether to eat, drink, sleep, play or work.

**AWARDED TO
IRENEINC PLANNING
& URBAN DESIGN IN
PARTNERSHIP WITH
THE UNIVERSITY
OF TASMANIA AND
THEIR NORTHERN
TRANSFORMATION
PROJECT TEAM,
AND THE CITY OF
LAUNCESTON**

**PROJECT
THE UNIVERSITY OF
TASMANIA – INVERESK**

The judges recognise the relocation of the University of Tasmania to a heritage site next to Launceston city centre as a landmark transformation in Launceston's urban landscape.

Category Sponsor

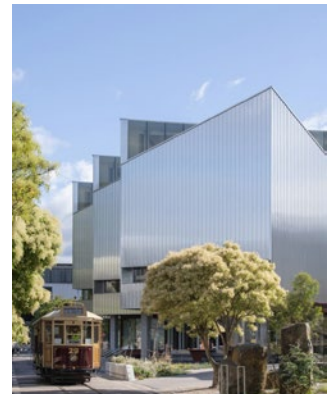


As a catalyst for urban redevelopment, the University's Inveresk precinct exemplifies how education precincts can spearhead urban rejuvenation, embedding sustainability, truth-telling, design excellence, heritage, and innovation at its core.

The judges were impressed by the reuse of heritage spaces and the sensitive integration of new buildings combining sustainable design and functionality for a modern educational facility.

Significant levels of engagement have clearly influenced this exceptional outcome. Engagement with First Nations and minority groups have resulted in spaces that are authentic and culturally meaningful.

The judges acknowledge that the redevelopment and reuse of this precinct is clearly a complex undertaking, with an outstanding result and truly a great place.



Improving Planning Processes

Improving Planning Processes

COMMENDATION
GHD, ZION
ENGAGEMENT AND
PLANNING AND
WATERS CONSULTANCY
TOGETHER WITH THEIR
CLIENTS DEPARTMENT
OF PLANNING AND
ENVIRONMENT,
TRANSPORT FOR NSW
AND SYDNEY METRO

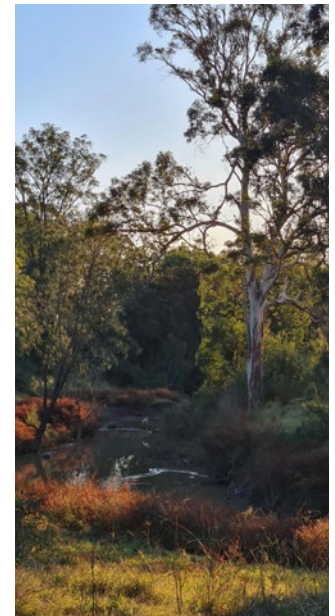
PROJECT
IMPROVING PLANNING
PROCESSES FOR
ABORIGINAL PEOPLE IN
WESTERN SYDNEY

The listening to Country methodology and considering best outcomes for Country with this project empowers and embeds Aboriginal people and their voices into the infrastructure processes to achieve better outcomes for Country, culture, and community and overall better outcomes; showing leadership and innovation.

Category Sponsor

Objective

The judges consider the tangible and intangible cultural heritage addressed in the project is excellent and something that most are still grappling with. It's clear from the examples that some great outcomes have already been achieved.



Planning with Country

Planning with Country

This award recognises projects and/or initiatives which promote collaboration, understanding, appreciation, awareness and celebrates Aboriginal and/or Torres Strait Islander knowledge, culture and tradition and their application to planning and land management.

AWARDED TO
KARLKA NYIYAPARLI
ABORIGINAL
CORPORATION,
JAMUKURNU
YAPALIKURNU
ABORIGINAL
CORPORATION,
PUNTUKURNU
ABORIGINAL MEDICAL
SERVICE, CREATING
COMMUNITIES, HAMES
SHARLEY AND BHP

PROJECT
EAST NEWMAN
PRECINCT
STRUCTURE PLAN

The East Newman Precinct Structure Plan is an exceptional example of First Nations led planning processes. Co-designed by Karlka Nyiyaparli Aboriginal Corporation, Jamukurnu

Category Sponsor



Yapalikurnu Aboriginal Corporation and Puntukurnu Aboriginal Medical Service, the plan is designed by the people, for the people – people who have walked this country for 60,000 years.

The structure plan identifies critical social infrastructure that will create ongoing, lasting and meaningful health, wellbeing, education and employment benefits for the East Newman area. The judges commend multiple First Nations groups for working together to navigate complex social and governance issues. The result is a highly innovative structure plan that genuinely responds to the needs of the local community.

The extent of unique and authentic engagement activities undertaken, high levels of community participation and the quality of feedback received is a testament to the team's dedication and passion for their community. The judges certainly believe the underlying success of the project can be attributed to a bespoke approach centred in a deep understanding of community needs and values.

The project serves as a shining example of community-led First Nations planning that other states can learn from.



Planning with Country

Planning with Country

**COMMENDATION
MILANGKANI PROJECTS
& CLARENCE CITY
COUNCIL**

**PROJECT
TAKARA LIMUNA**

takara limuna are interpretative recordings of the oral history of the Mumirimina people in palawa kani. The recordings, accessed by QR Codes in key areas of the Bedlam Walls reserve, are accompanied by art installations from local Aboriginal artists that depict the area's rich Aboriginal Cultural Heritage. The judges particularly commend the innovative approach of blending traditional knowledge with technology to educate visitors of the unique cultural importance of the reserve.

The highly innovative and inclusive approach of using traditional knowledge, in the words of traditional owners, to tell the story of country has created a unique place of learning that pays respect to Aboriginal culture.

Category Sponsor



Layering the natural beauty of the area with high quality and educational art installations, viewing platforms, gathering places and tracks further reinforces the cultural significance and authenticity of place and its rich Aboriginal history. The judges believe the methods of collaboration, integration and consultation, together with the formats of presentation are adaptable and transferable to many different jurisdictions and areas across Australia.



Planning with Country

26
Planning with Country

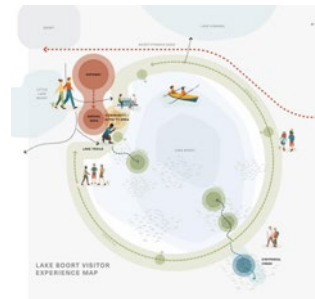
COMMENDATION ASPECT STUDIOS IN COLLABORATION WITH DJAARA

PROJECT LAKE BOORT SCARRED TREES MASTERPLAN

The Lake Boort Scarred Trees Masterplan is a First Nation led master planning process that seeks to manage cultural tourism by highlighting and protecting the cultural significance of the Lake Boort area. The judges commend the highly collaborative research and design process and its approach to educate visitors about the significance of place through cultural learning.

The strengthening of relationships between Traditional Owners and local authorities and a collective commitment to support key implementation actions is an excellent outcome. The judges were impressed by the focus on self-determination and use of Strategic Plan goals to inform the balancing of cultural,

economic, environment and design outcomes. The unique approaches to engagement and navigation through complex and highly sensitive issues has also undoubtedly shaped an authentic master plan. The judges look forward to following this project and observing how the implementation aspects of the masterplan are delivered and the cultural significance of the place is reinforced over time.



Category Sponsor



Planning Research

Planning Research

This award recognises an outstanding achievement in planning research. It is awarded for a substantial piece of planning research which makes an outstanding contribution to the understanding of contemporary issues relating to planning in Australia.

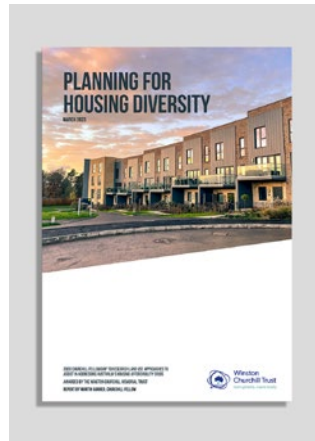
AWARDED TO
MARTIN GARRED MPIA

PROJECT
PLANNING FOR
HOUSING DIVERSITY

'Planning for Housing Diversity' by Martin Garred MPIA is an exceptional example of cutting-edge, implementation-focused research.

In preparing his report, Martin travelled to the UK, US, Denmark and Sweden as a Churchill Fellow, to investigate broad and varied approaches to delivering affordable housing. However, Martin's work is much more than an intriguing investigation - it's an outcomes-focused roadmap to achieving diverse, affordable housing outcomes in Queensland and Australia more broadly.

Martin's 'Planning for Housing Diversity' report remains a timely call to action, and we remain impressed by the transferability and practicality of the work.



Category Sponsor



Planning Research

Planning Research

28
Planning Research

AWARDED TO INFRASTRUCTURE VICTORIA

PROJECT OUR HOME CHOICES: HOW MORE HOUSING OPTIONS CAN MAKE BETTER USE OF VICTORIA'S EXISTING INFRASTRUCTURE

Infrastructure Victoria's 'Our Home Choices' report expands discourse around understanding the housing supply and affordability crisis. The research has made a demonstrable contribution to the industry since its release earlier in the year and has proven to be a catalyst in shifting public attention toward the importance of planning in delivering inclusive, healthy, and liveable cities.

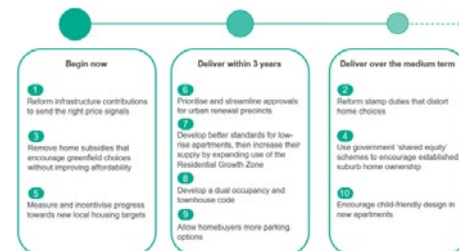
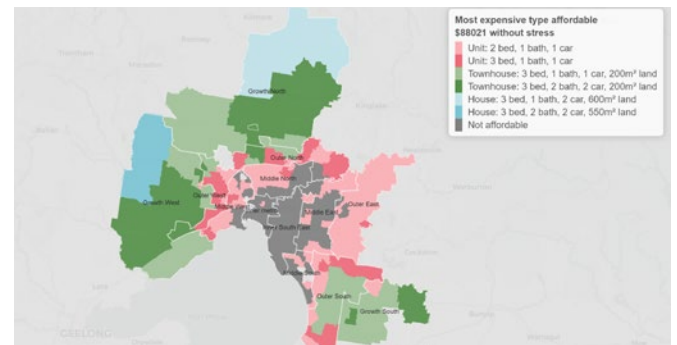
Infrastructure Victoria has prepared a comprehensive report which is supported by extensive research, including diverse stakeholder engagement.

Category Sponsor



The research has 'looked inward' to deepen the understanding of household preferences, home choices and 'trade-offs', and balancing growth across the state.

Findings in the research has reinforced the need for reform in Victoria. The policy options provided through the research emphasise the need for a holistic approach in the delivery of improved housing delivery and outcomes, to increase the delivery and uptake of housing in established suburbs.



Stakeholder Engagement

This award recognises initiatives and outcomes in implementing best practice public engagement that achieves genuine collaborative outcomes that leads to improved built form, planning processes or social outcomes. This award is not about the extent of engagement undertaken but the influence, improvement and capacity building that was achieved through the engagement. This award is about genuine and meaningful engagement with stakeholders and the community.

AWARDED TO
NICHE STUDIO,
CLARENCE CITY
COUNCIL, AND ENTURA.

PROJECT
SEVEN MILE BEACH
LOCAL AREA PLAN

The judges recognise that this project is a great example of best practice stakeholder engagement.

This project adopted a pro-active, tactical approach to engaging with those community members who are often unable or unwilling to engage, thus addressing an age-old planning challenge. The resulting approach incorporating intercept surveys was an effective, targeted and inexpensive way to hear from an often-little heard part

of the local community, helping to inform the sensitive topic of growth management.

The judges were impressed by the adaptability of the approach, its expanded focus to address other issues of local concern and its flexibility to meet stakeholder expectations resulting in meaningful engagement. This project serves as an excellent model for similar projects in other jurisdictions.

The result of this engagement process is a shared vision for Seven Mile Beach that will guide future land use and development and appropriate responses to other key planning-related issues in this area.

Category Sponsor



Stakeholder Engagement

COMMENDATION
CITY OF KWINANA,
RAC AND CREATIVE
COMMUNITIES
INTERNATIONAL

PROJECT
WELLARD VILLAGE 7
DAY MAKEOVER

The judges recognise the innovative, collaborative approach taken by the City of Kwinana, in partnership with the team from RAC Reconnect WA, and facilitated by David Engwicht, to inspire the local community to collectively reimagine and revitalise the Wellard Village neighbourhood centre.

The project demonstrates how local residents can be empowered to transform their neighbourhood, using a dynamic, fast paced, enjoyable and action-oriented approach, engaging people of all walks of life to get involved and make significant tangible changes to an area. The judges particularly commend the focus on young people.

Category Sponsor



**Queensland
Government**

The 7 Day Makeover project has acted as a catalyst to build strong and enduring relationships between Council and its community, and fostered inter-generational connections with a sense of shared ownership and identity in the Wellard Village neighbourhood centre.



Strategic Planning Project

Strategic Planning Project

This award recognises an outstanding strategic planning project, which includes regional plans, structure plans, master plans, infrastructure plans, planning schemes and similar.

Strategic planning projects may also be recognised for overcoming significant challenges or hurdles to realise outstanding strategic planning outcomes.

**AWARDED TO
MILDURA RURAL
CITY COUNCIL AND
THE INSTITUTE FOR
SENSIBLE TRANSPORT**

**PROJECT
MILDURA CBD ACCESS
AND MOBILITY
STRATEGY**

The Mildura CBD Access and Mobility Strategy stood out as an exemplary and forward-thinking Strategic Planning Project, addressing the imperative shift towards more sustainable and efficient mobility within a regional city context. The judging panel commended the project for its pragmatic vision for improvements, underpinned by a practical and robust evidence base.

An innovative and thorough community engagement process was undertaken, which was instrumental in achieving location-appropriate policy application in a regional CBD environment.

The strategy's impact is evident in the tangible improvements it has brought to Mildura's mobility landscape. The project serves as a blueprint other regional towns and local councils, offering a replicable model for effecting positive change in car-dependent regional towns. Notably, it leverages Victoria's Department of Planning and Transport's Movement and Place methodology, showcasing the potential for transformative initiatives even in resource-constrained environments.

Category Sponsor



Technology & Digital Innovation

32 This award recognises the importance of technology and digital innovation in 21st century planning. Digital opportunities and adapting technology to assist planning in our changing environment is critical. This award recognises the value that digital innovation and technology processes provide for planners, planning authorities and development entities.

Technology & Digital Innovation

AWARDED TO PROPERTY AND DEVELOPMENT NSW, IN COLLABORATION WITH WSP AUSTRALIA, GIRAFFE TECHNOLOGY AND AEROMETREX

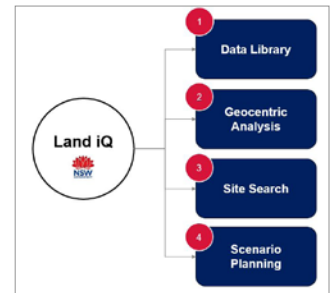
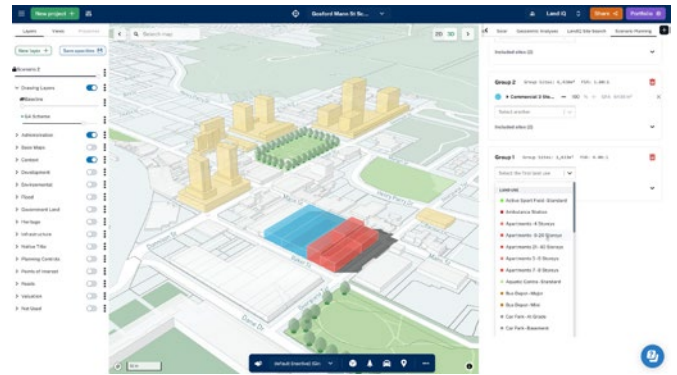
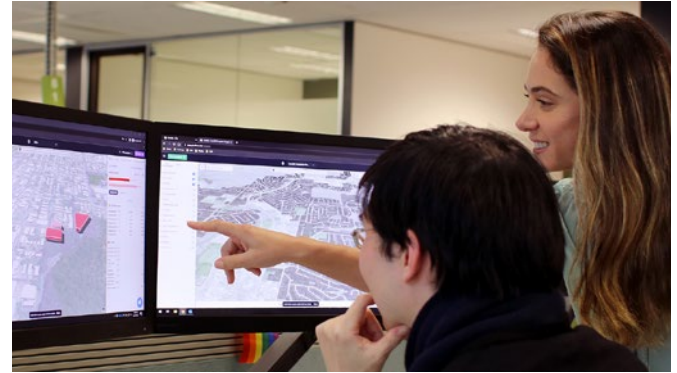
PROJECT LAND IQ - STANDARDISED LAND USE EVALUATION TOOL

Land IQ embraces technology to deliver better planning practice and outcomes. Its capabilities allow planners to reimagine how we plan, design, communicate and work together with improved efficiencies. It provides a single platform that leverages data, automation, and scenario modelling to navigate planning intricacies and to unravel land use potential.

Category Sponsor



The program consolidates over 200 data sources with smart metrics to provide an in-depth understanding of a place or region. Users can search across 8 million lots and properties in NSW to identify sites to test how different land use formats perform and impact their surroundings. It is already being used by NSW Government to rapidly identify and analyse sites for temporary and permanent housing in flood affected regions and to identify land for social and affordable housing.



Technology & Digital Innovation

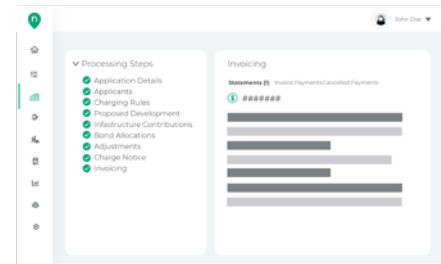
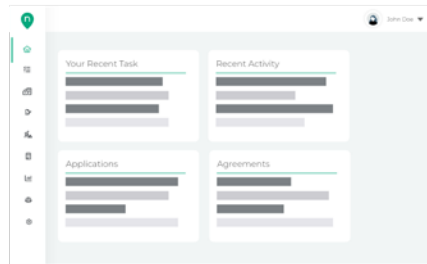
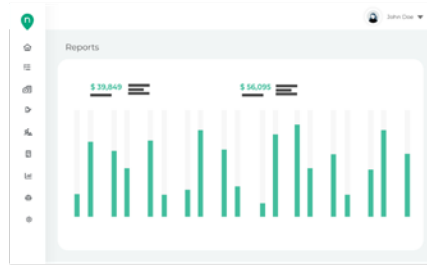
COMMENDATION NOVOPLAN

PROJECT TRANSFORMING INFRASTRUCTURE CONTRIBUTIONS AND DELIVERY

Novoplan has successfully transformed infrastructure contributions into an innovative 'software as a service' solution to assist local and state authorities to manage the intricate infrastructure contribution process. It is a great example of how technology can create efficiencies for a complex problem with important economic consequences.

It is estimated that the streamlining and reliability of the tool has resulted in savings of \$20 million among users. The success of the tool can be seen in its adoption by eight authorities across Queensland and New South Wales who collectively manage over 800 infrastructure agreements, process over 5,000 development applications each year and manage over \$400 million in annual infrastructure contribution revenue.

Category Sponsor



Tertiary Student Project

Tertiary Student Project

34 Tertiary Student Project

This award recognises outstanding planning work by an individual or group of tertiary students. It is awarded for a substantial project, report, book, thesis, article or piece of research which makes a significant contribution to planning and development outcomes.

AWARDED TO
ELOISE REDDY PIA
(ASSOC.)

PROJECT
ARTIDOTE: THE PUBLIC
ART OF HEALING

This university thesis explores the link between the arts and mental wellbeing in the built environment. The project investigates how local government can facilitate a new type of 'trauma-informed public art' to support community healing following a collective tragedy.

The project combines analysis of international literature, comparative case studies, cultural policy contexts, and professional perspectives. It weaves together disciplines that would typically not be in dialogue, forging collaboration between planning, the arts, and healthcare. The research establishes three guiding principles – community

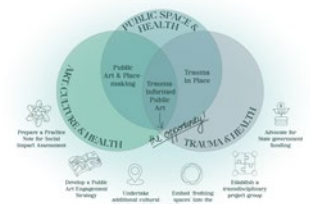
participation, site responsiveness, and transdisciplinary collaboration.

The judges decision was unanimous, and they were impressed by the quality and originality of this work. The topic is unique and the research processes and outcomes are exemplary. It is clear the research has been well received through journal publishing and presentations at conferences. Eloise's findings and recommendations are readily transferrable across local governments areas and amongst practitioners. The work shows wisdom and skill well beyond the author's years.

Category Sponsor



Department of Transport and Planning



Tertiary Student Project

Tertiary Student Project

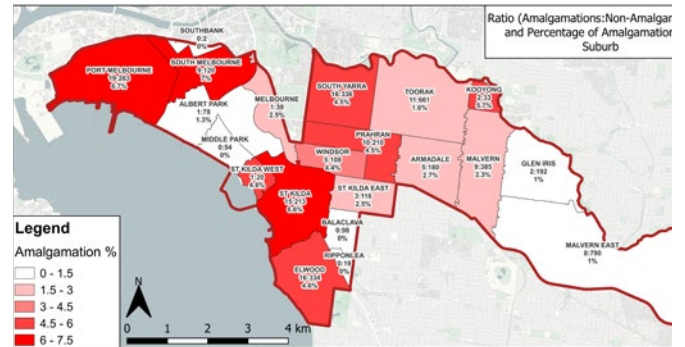
COMMENDATION
NICK MCFARLANE

PROJECT
PARCEL
AMALGAMATIONS
FOR URBAN
CONSOLIDATION:
THE ROLE OF
STATUTORY PLANNING
MECHANISMS

The need for more housing provision in established areas where people have good access to transport, jobs and community facilities is widely acknowledged. Against this backdrop, Nick's work presents a strong argument for urban consolidation policies to move beyond blanket upzoning practice, towards more targeted intervention in strategically optimal locations. His work challenges planners and policy-makers to consider how current practices may inadvertently re-direct development intensity to unintended locations.

The Judges considered this to be an excellent research piece on a very topical matter. Nick's approach to data analysis and research, including the use of GIS inputs and real estate data provided an excellent sample size and geographic analysis of the topic. Qualitative analysis, through discussions with professionals, provided another layer of rigour to the research.

Category Sponsor



Tertiary Student Project

Tertiary Student Project

36 Tertiary Student Project

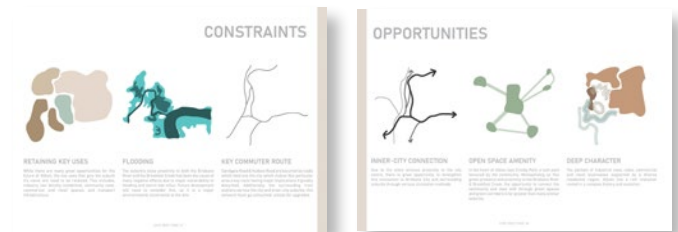
COMMENDATION
NIEVE FEENEY PIA (ASSOC.), ALEXANDER GOUGH PIA (ASSOC.), LUKE JONES PIA (ASSOC.), ELISHA TRAN PIA (ASSOC.), CHRISTIANNA TSIBOUKAS PIA (ASSOC.), AND JOANNA STAVRIANOS PIA (ASSOC.) - QUEENSLAND UNIVERSITY OF TECHNOLOGY

PROJECT
ALBION REVITALISATION PROJECT

The strategies and actions within this project are multi-faceted and have the potential to deliver high quality outcomes for the reinvigoration of Albion, creating a unique community identity and a legacy beyond the 2032 Brisbane Olympics Games. The masterplan includes a comprehensive

engagement approach, and the planning methodology would be transferable to other revitalisation projects.

The judges were impressed by the practical and pragmatic approach taken in this beautifully presented and clearly well researched project. The project demonstrates a high level of teamwork and a good understanding of planning practices ordinarily expected of qualified professionals. The objectives were clear and focussed on a good understanding of the challenges, while the proposed interventions were well aligned with the identified issues.



Category Sponsor



Department
of Transport
and Planning

Young Planner of The Year

This award recognises a Young Planner who has made an outstanding contribution or achieved something significant.

AWARDED TO KOBI LANE MPIA

Kobi was the standout candidate for the national award. The judges were overwhelmingly impressed with what he has achieved in such a short amount of time.

Kobi is a very active member of the Institute, and is a champion of, and mentor to young planners in Queensland. Kobi has been an advocate for great planning outcomes through his work in academia, local government and even as a planning officer for the police force. He is particularly interested in the symbiotic relationship between the urban environment and its effect on mental wellbeing.

Kobi is deserving of this award as he welcomes opportunities to learn through experience, lift others up, and launch himself into the most complex planning issues of the day. As a volunteer, an advocate, passionate about regional local government and enmeshed in continual learning, we look forward to seeing how Kobi uses his profile as Young Planner of the year to lift our profession and advocate for young planners across Australia.



37

Young Planner of The Year

Category Sponsor



Nominations

2024 Awards Nominations

38 2024 Awards Nominations

CLIMATE CHANGE & RESILIENCE

North Wright Compact Housing Precinct

Suburban Land Agency | ACT

Building Back Northern Rivers

Cred Consulting, the NSW Department of Planning and Environment Planning Delivery Unit, Ballina Shire Council, Byron Shire Council, Clarence Valley Council, Kyogle Council, Lismore City Council, Richmond Valley Council, and Tweed Shire Council | NSW

Natural Hazard Risk Assessments and Place-based Land Use Policy Development Program

Ipswich City Council, Meridian Urban, and Water Technology | QLD

River Murray Flood Resilience Code Amendment

Planning and Land Use Services, Department for Trade and Investment and the River Murray Flood Planning and Building Working Group | SA

South Gippsland Coastal Strategy

South Gippsland Shire Council | VIC

Environmentally Sustainable Design of Single Houses and Grouped Dwellings

City of Vincent & Cerclos | WA

COMMUNITY WELLBEING & DIVERSITY

ACT Gender Sensitive Urban Design Framework and Toolkit

ACT Government, PLACE Laboratory, OCULUS, Communication Link, Inhabit Place | ACT

Rebuild Cobargo

SJB Planning, DunnHillam and CCDC (Cobargo Community Development Corporation) | NSW

The Buzz at Yarrabilba

Queensland Government, Logan City Council, Brisbane Catholic Education and Lendlease. | QLD

Brighton Social Infrastructure Plan

Brighton Council, Ethos Urban, theCommunityCollaborative and Ireneinc Planning and Urban Design | TAS

Co-designing and co-creating public places with young people

RAC, Town of Port Hedland, Shire of Trayning and Town Team Movement | WA

GREAT PLACE

Lindfield Village Green

Ku-ring-gai Council | NSW

Hanlon Park / Bur'uda

Brisbane City Council in collaboration with AECOM, Gaskell Planning, Bligh Tanner,

Deicke Richards, LatStudios, E2DesignLab, CPR Group, Tract and proudly constructed by Epoca Constructions Pty Ltd. | QLD

The University of Tasmania - Inveresk

Ireneinc Planning and Urban Design in partnership with the University of Tasmania and their Northern Transformation project team, and the City of Launceston | TAS

Co-designing and co-creating public places with young people

RAC, Town of Port Hedland, Shire of Trayning and Town Team Movement | WA

IMPROVING PLANNING PROCESSES

Improving planning processes for Aboriginal people in Western Sydney

GHD, Zion Engagement and Planning and Waters Consultancy together with their clients Department of Planning and Environment, Transport for NSW and Sydney Metro | NSW

Brisbane Green Factor

Brisbane City Council - Design Brisbane, City Planning and Economic Development | QLD

Transitioning to the PDI Act

City of Unley | SA

The Pre-lodgement Public Consultation Concession in Local Planning Policy 7.2 - Reducing, Refunding and Waiving Planning Fees

City of Subiaco | WA

PLANNING WITH COUNTRY

Western Sydney Airport Connecting with Country Project

GHD in partnership with Zion Engagement and Planning, Sydney Metro and the Sydney Metro - Western Sydney Airport Connecting with Country Working Group. | NSW

takara limuna

Milangkani Projects & Clarence City Council | TAS

Lake Boort Scarred Trees Masterplan

Aspect Studios in collaboration with DJAARA | VIC

East Newman Precinct Structure Plan

Karlka Nyiyaparli Aboriginal Corporation, Jamukurnu Yapalikurnu Aboriginal Corporation, Puntukurnu Aboriginal Medical Service, Creating Communities, Hames Sharley and BHP | WA

PLANNING RESEARCH

Unrealised Sydney exhibition

Joint Partners: Museums of History NSW and Professor Robert Freestone Contributors: Junior Major and Urbis | NSW

Planning for Housing Diversity

Martin Garred MPIA | QLD

Walkable for Who? Applying a GIS-based Walkability Assessment Tool at the Metropolitan and Local Levels by Sex and Age in Australia with the Focus on the Greater Adelaide Metropolitan Area

Arsham Bassiri Abyaneh PIA (Assoc.), Andrew Allan MPIA, Johannes Pieters MPIA, Ali Soltani PIA (Assoc.) | SA

Our home choices: how more housing options can make better use of Victoria's existing infrastructure

Infrastructure Victoria | VIC

The HIGH LIFE Study: The policy and practice of designing healthy equitable apartments

Sarah Foster (RMIT), Paula Hooper (UWA), Alexandra Kleeman (RMIT), Clover Maitland (UWA) and Julian Bolleter (UWA) | WA

STAKEHOLDER ENGAGEMENT

Robertson Village Place Plan

Wingecarribee Shire Council | NSW

New Ipswich Planning Scheme (Ipswich Plan 2024)

Ipswich City Council and Articulous | QLD

Equine Strategy Engagement

Adelaide Plains Council

Seven Mile Beach Local Area Plan

Niche Studio, Clarence City Council, and Entura | SA

The Place Shaper Kit

Victorian Planning Authority | TAS

Wellard Village 7 Day Makeover

City of Kwinana, RAC and Creative Communities International | WA

STRATEGIC PLANNING PROJECT

UNSW Canberra City Campus Master Plan

MGS Architects, Snøhetta, Turf Design Studio, ARUP | ACT

Coffs Harbour Public Realm Strategy

City of Coffs Harbour | NSW

Sunshine Coast 'Coastal Corridor' Place and Character Resource

Tract and Urban Enquiry | QLD

Two Wells Walking Cycling Plan

Adelaide Plains Council | SA

Central Hobart Plan

City of Hobart | TAS

Mildura CBD Access and Mobility Strategy

Mildura Rural City Council and the Institute for Sensible Transport | VIC

Strategic Port Master Plan hat-trick

Southern Ports Authority | WA

TECHNOLOGY & DIGITAL INNOVATION

Land iQ - Standardised Land Use Evaluation Tool

Property and Development NSW, in collaboration with WSP Australia, Giraffe Technology and Aerometrex | NSW

Transforming infrastructure contributions and delivery

Novoplan | QLD

Reimagining Interactions with the Planning System Through Technology – Interactive Map

Viewers and Subscription Services

Planning and Land Use Services – Dept for Trade and Investment | SA

City of Launceston 3D City Model

City of Launceston | TAS

Moving Melton Digital Prospectus

Melton City Council | VIC

Stirling Fast-Track (Development Applications)

City of Stirling | WA

TERTIARY STUDENT PROJECT

Artidote: The Public Art of Healing

Eloise Reddy PIA (Assoc.) | NSW

Albion Revitalisation Project

Nieve Feeney PIA (Assoc.), Alexander Gough PIA (Assoc.), Luke Jones PIA (Assoc.), Elisha Tran PIA (Assoc.), Christianna Tsiboukas PIA (Assoc.), and Joanna Stavrianos PIA (Assoc.) - Queensland University of Technology | QLD

Reviving Millicent Civic and Art Precinct

Anita Mandia, Darshi Gohel PIA (Assoc.), Nayan Khairnar, Rajat Bhatia | SA

Parcel Amalgamations for Urban Consolidation: The Role of Statutory Planning Mechanisms

Nick McFarlane | VIC

Melbourne, Edgars Rd / Main Street Urban Regeneration Plan

Becky Liao, Yun Shu Wong, Will Jacobsen, Damien Lockyer, Ashleigh Santich | WA

YOUNG PLANNER OF THE YEAR

Dot Hepburn MPIA | ACT

Henry Black PIA (Assoc.) | NSW

Kobi Lane MPIA | QLD

Brendan Le Poidevin MPIA | SA

Apurva Bora PIA (Assoc.) | TAS

Oscar Yencken PIA (Assoc.) | VIC



Planning Institute of Australia (PIA) is the national body representing planning and the planning profession. Through education, communication and professional development, PIA is the pivotal organisation serving and guiding thousands of planning professionals in their role of creating better communities.

PIA currently represents approximately 5,700 members nationally and internationally, and connects with more than 11,000 planners annually. We are governed by a National Board of Directors and managed by a professional administration. We are a member-based organisation with its management complemented by volunteers, who support and contribute to our activities on various levels.

Our mission is to champion the role of planning in shaping Australia's future. PIA will do this through strong leadership, advocacy and contemporary planning education.

Our vision is for PIA to be Australia's trusted voice on Planning.